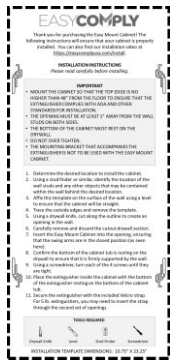


Easy Comply Cabinets

Cut pre-measured opening using the **included template**

Insert the Easy Comply Cabinet and **tighten the 4 screws**

Set the extinguisher on the bottom and **secure with the strap**



DESCRIPTION

The Easy Comply Cabinet was designed with the 2010 ADA Standards for Accessible Design Section 307.2 Protrusion Limits and NFPA-101 4" Projecting Object Rules in mind. Easy Comply Cabinets can recess into drywall or similar surfaces without the need for framing, patching or painting!

Easy Comply Cabinets allow commercial fire extinguishers to comply with a variety of projecting object limitations by partially recessing the extinguisher inside the wall. It also provides a much more secure mounting solution than the typical flimsy hook included with many commercial extinguishers.

INSTALLATION

1. Cut an opening using the provided template.
2. Insert the Easy Comply Cabinet.
3. Tighten the 4 screws to secure the Easy Comply Cabinet to the surface.
4. Place fire extinguisher inside the cabinet and secure with the provided Velcro strap.

SPECIFICATIONS

WEIGHT	48 oz
DIMENSIONS	27 × 13 × 3 in
OUTSIDE FRAME WIDTH	12.5"
OUTSIDE FRAME HEIGHT	26.5"
INSIDE TUB WIDTH	9"
INSIDE TUB HEIGHT	23"
INSIDE TUB DEPTH	3"
CUT OUT DIMENSIONS	10.75" x 23.25"

ADDITIONAL INFORMATION

- Cabinets are designed to fit most 10 lb and smaller extinguishers, though may be suitable for larger sizes.
- Not designed for fire-rated applications.
- Cabinet covers will be available soon and will retroactively fit existing cabinets.

Visit EasyComplyUSA.com for more information.

Patent Pending. Not designed for fire-rated applications.